

## Community Safety and Crime Prevention Plan

### Foreword

Feeling safe in our community is really important to our quality of life.

As part of our commitment to improving the sense of safety for local residents, we have developed this comprehensive Community Safety and Crime Prevention Plan.

This plan has been produced to guide Council's community safety initiatives over the next three (3) years.

It seeks to build on the work already done towards reducing crime and making our community safer for all residents to enjoy.

The Community Safety and Crime Prevention Plan focuses on two prominent crime categories in Canterbury Local Government Area. The crimes identified in the Plan are Motor Vehicle Theft and Robbery. To identify these priority offences, extensive research, community consultation and collaboration with local stake holders was conducted.

The plan demonstrates Council's commitment to community safety and our thanks go to our partners in crime prevention for their support in developing this resource.



Cr Robert Furolo  
**MAYOR**

## **Acknowledgements**

The City of Canterbury Council would like to acknowledge the work of our crime prevention partners in the development of this plan, with whom Council works alongside on a regular basis to develop and implement programs which make our City a safer place.

In addition to our specific crime prevention partners, there are a range of community organisations which have assisted Council over the past 15 years of community safety and made a significant contribution to our City, crime prevention and community safety.

We also thank those community residents who participated in our community safety planning through the social planning forums and surveys, providing valuable information that contributed to the development of this plan.

## **EXECUTIVE SUMMARY**

Community safety is a priority for the City of Canterbury Council. Over the past 15 years we have developed a large number of comprehensive programs that have successfully engaged local residents and agencies in crime prevention initiatives.

The development of a Community Safety and Crime Prevention Plan provides an overview of our activities, programs and partnerships for crime prevention over the next three years. The plan will assist Council in working towards reducing crime, along with addressing the needs of the community, including fear and perceptions of crime.

Our Community Safety Plan has been developed in accordance with NSW legislation adhering to a set of criteria established by the NSW Attorney General's Office. Our community safety programs are developed according to statistics and evidence regarding crime in our local community, and community consultation as part of our Social Plan preparation.

This plan looks to expand on existing programs, whilst developing new programs to address current offences and crime in Canterbury. Our approach to community safety is evidenced based, working with our community safety partners to reduce and prevent crime and provide a safer community for the residents of Canterbury City.

## **SECTION 1: Crime Profile**

This plan is to specify what crimes are prevalent in Canterbury, and what programs Council needs to develop in order to reduce crime.

### **Consultation**

In June 2007, Council conducted a Community Safety Survey. The survey was part of our community consultation process for the 2008 - 2013 Community Safety Compact.

The survey consisted of 400 phone surveys to households in Canterbury. The participants of this survey were a random sample selected by a computer based program using a residential phone database.

The survey investigated residents perceptions and experiences of crime, and asked what they thought Council can do to improve safety in the local community.

### **Canterbury's Community Safety Survey – Findings**

The main crime problems identified by the local community as being most prevalent were Robbery/theft (33%), Dangerous driving/speeding (18%), Break and enter (18%), Drugs (12%), and Assault (12%).

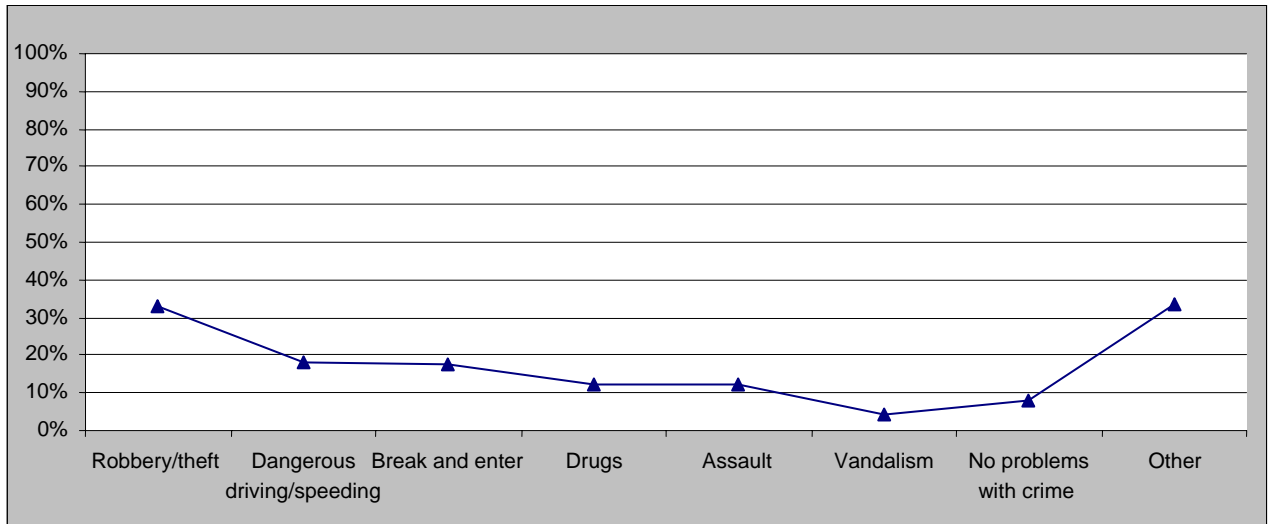
Fear of crime when residents were out and about during the day had decreased since 2001 with 75% of respondents having no or little fear of crime. Fear of crime when out and about during the night remained similar to 2001, with 36% of respondents having no or little fear of crime, 28% 'moderate fear', 16% 'considerable fear' and 20% 'great fear'.

The issues that made respondents feel unsafe in public places were 'lack of lighting' and 'young people on the streets'.

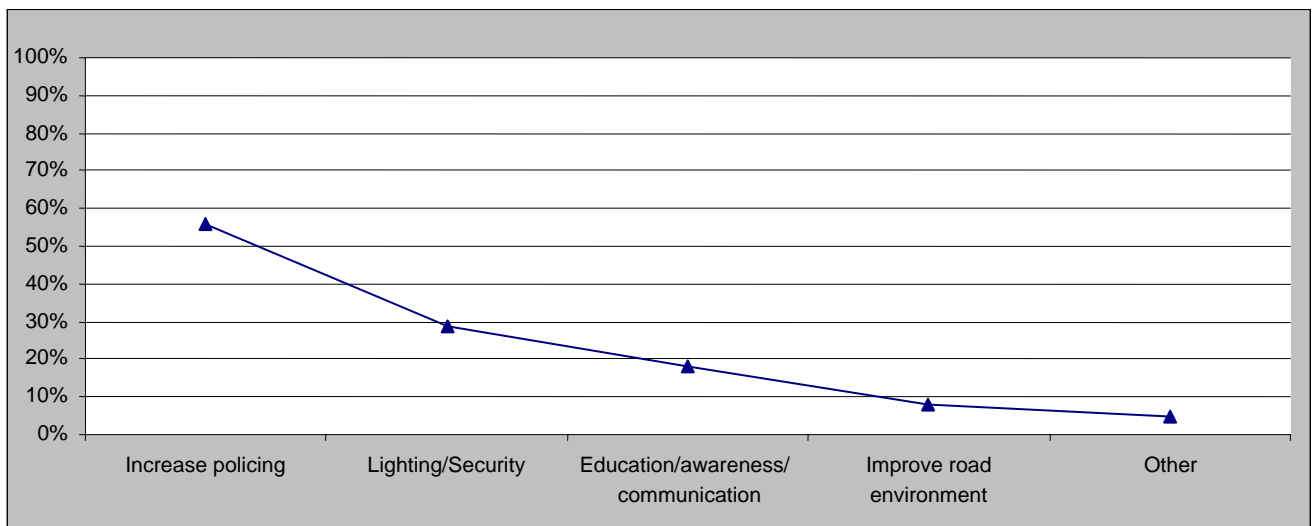
When asked what Canterbury City Council could do to improve community safety in Canterbury City, the most common responses were:

- increase policing;
- lighting/security;
- education/awareness
- communication; and
- improve road environment.

Graph 1 Community Consultation – Perceived Crime Threats



Graph 2 Community Consultation Perceived Safety Responses



Micromex – City of Canterbury Safety Survey 2007

## **Social Plan Consultations 2007**

Social Plan consultations were conducted in September 2007, providing an opportunity for the community to discuss, in person, their perceptions of community safety and what areas need development.

The following areas were identified from the Social Plan consultations as concerns for the community;

- **Bag Snatching/ Assaults On Residents**
  - Seniors feel vulnerable and are reluctant to visit the bank for fear of bag snatchers.
  - Physical assault
  - Some feel that even leaving the building leaves them vulnerable to offenders on the street.
  - Fear of assault is even greater if you live alone.
  
- **Safety At Night**
  - Groups gather at night and make residents feel nervous about being out at night.
  - Fear of crime is worse at nighttime as it's very dark in the streets and shops are shut.
  
- **Lighting**
  - More lighting in public places.
  
- **Youth Issues**
  - Serious fear of groups of young people at night.
  - Youths in groups intimidate local residents.
  - Skateboarders using skate park ride on the footpaths/safety hazard to older people.
  - Gangs congregate in the parks and make a mess at night.
  - Young people need more educational programs to help get them into work, off the streets at night.
  
- **Lighting / Footpaths**
  - Repairing of footpaths.
  - Need for general lighting.
  - Library light goes off too early, around 9.30pm.
  
- **Alcohol Related Incidents**
  - Public drinking at night.
  - Need to discourage people from drinking in parks as they leave their bottles behind and these pose a safety hazard to community.
  - Drug dealers operating at night.

## Crime Statistics

Crime statistics from The Bureau of Crime Statistics and Research (BOCSAR) provide a break down of the most prevalent crimes for local government areas throughout NSW. The following analysis is data collected from BOCSAR on all crime and trends for the City of Canterbury.

## Analysis

BOCSAR provides an online tool which enables a comparison with Local Government Areas (LGA) throughout NSW. A top 50 LGA ranking for all offences is compiled providing an analysis of where Canterbury is placed in terms of prevalent crime.

In 2007, Canterbury was ranked ninth (9) for robbery and sixteenth (16) for motor vehicle theft.

Table 1 LGA offences

Crime	LGA Ranking	Reported Incidents
Robbery	9	266
Motor Vehicle Theft	16	771

**BOSCAR 2007**

## ***Local Crime Priority 1: Robbery***

In 2007, there were 266 reported incidents of robbery in Canterbury, consisting of robbery without a weapon 160 (116.1 per 100,000), robbery with a weapon not a firearm 87 (63.2 per 100,000) and robbery with a firearm 19 (13.8 per 100,000).

Canterbury had a higher rate of robbery when compared to the Sydney SD; robbery without a weapon (95.4 per 100,000), robbery with a weapon not a firearm (47 per 100,000) and robbery with a firearm (11.3 per 100,000).

Robbery throughout NSW was recorded as; robbery without a weapon (70.9 per 100,000), robbery with a weapon not a firearm (34.0 per 100,000) and robbery with a firearm (8.0 per 100,000).

Table 2 Robbery Statistics 2007

<b>Robbery</b>	<b>Canterbury per 100,000</b>	<b>Sydney SD per 100,000</b>	<b>NSW per 100,000</b>
Robbery without a weapon	116.1	95.4	70.9
Robbery with weapon not a firearm	63.2	47.0	34.0
Robbery with firearm	13.8	11.3	8.0

**BOCSAR 2007**

Statistics collected by the NSW Police Local Area Command (LAC) reported that there were 340 robbery offences in 2006, compared to 253 robberies in 2007, categorized as armed robbery, demand money with menaces, extortion/blackmail, other robbery, robbery with aggravation and robbery with wounding.

### **Robbery by Locality:**

In 2006, there were 115 armed robberies (33.8% of all robbery offences) throughout the Campsie LAC. The suburb of Campsie had the highest level of armed robbery with 22.6% of armed robberies, followed by Lakemba (14.8%), Punchbowl (13.0%) and Belmore (10.4%).

In 2007, there were 80 armed robberies (31.6% of robbery offences) throughout the Campsie LAC, with Lakemba (18.7%), Campsie (15.0%), Punchbowl (15.0%), and Belmore (12.5%). Overall, there was a decrease of 22.6% of armed robberies from 2006 to 2007 (Appendix 2).

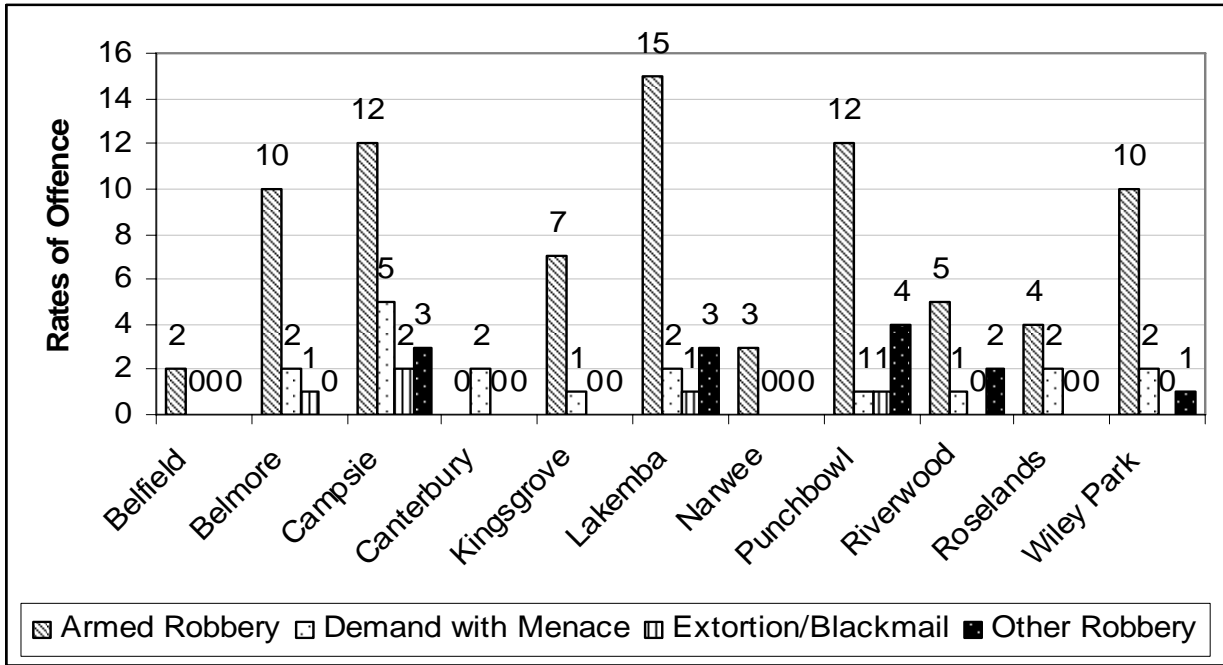
In 2006, there were 82 robberies (24.2% of all robbery offences) throughout the Campsie LAC, areas affected were Campsie with 27 (22.6%) reported robberies, followed by Lakemba (19.5%), Punchbowl (12.2%), Belmore (12.2%), Wiley Park (7.3%) and Riverwood (4.9%).

In 2007, there were 72 robberies (28.4% of all robbery offences) throughout the local area command; Campsie (36.1%), followed by Lakemba (22.2%), Belmore (8.3%), Riverwood (8.3%), and Wiley Park (8.3%).

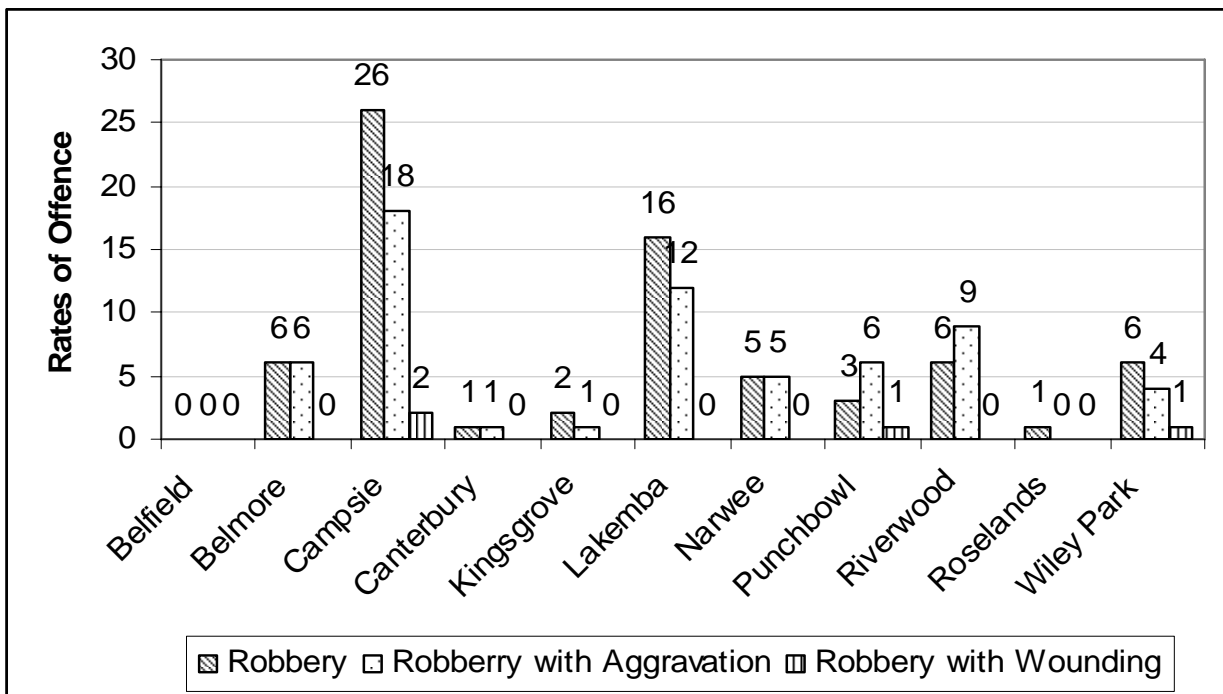
In 2006, there were 99 aggravated robberies (29.1% of all robbery offences); with 36.4% in Campsie, compared to Belmore (23.2%), Lakemba (10.1%), Wiley Park (10.1%), Punchbowl (8.0%) and Riverwood (5.0%).

In 2007 there were 62 (24.5% of all robbery offences) aggravated robberies, with 29.0% in Campsie, followed by Lakemba (19.3%), Riverwood (9.0%), Belmore (6.0%) and Punchbowl (6.0%).

Graph 4 Robbery Offence and Locality 2007 (Part A)



Graph 4 Robbery Offence and Locality 2007 (Part B)



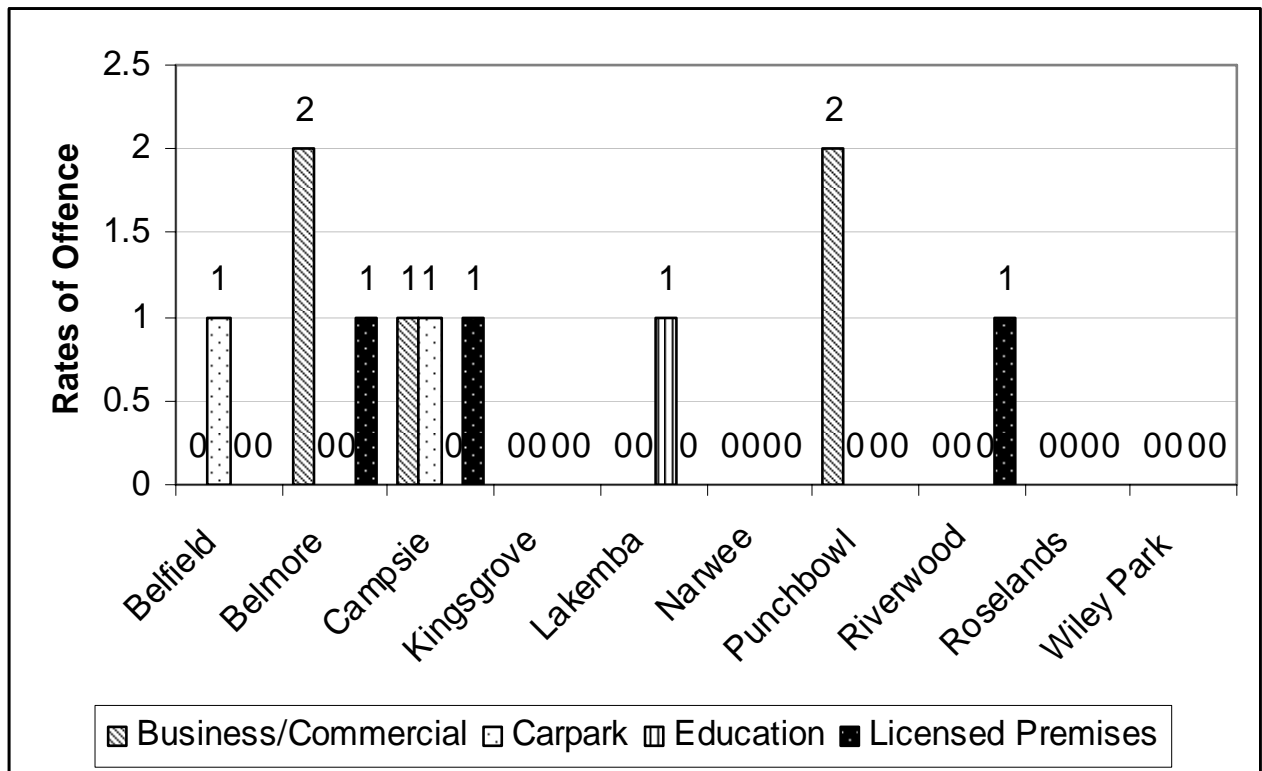
**Robbery by place and premise type:**

In 2007, 51.0% of robberies were committed in outdoor/public spaces, followed by business/commercial properties (20.5%) residential (10.3%), transport (7.1%), licensed premises (5.1%), carparks (2.7%), and education institutions (1.2%).

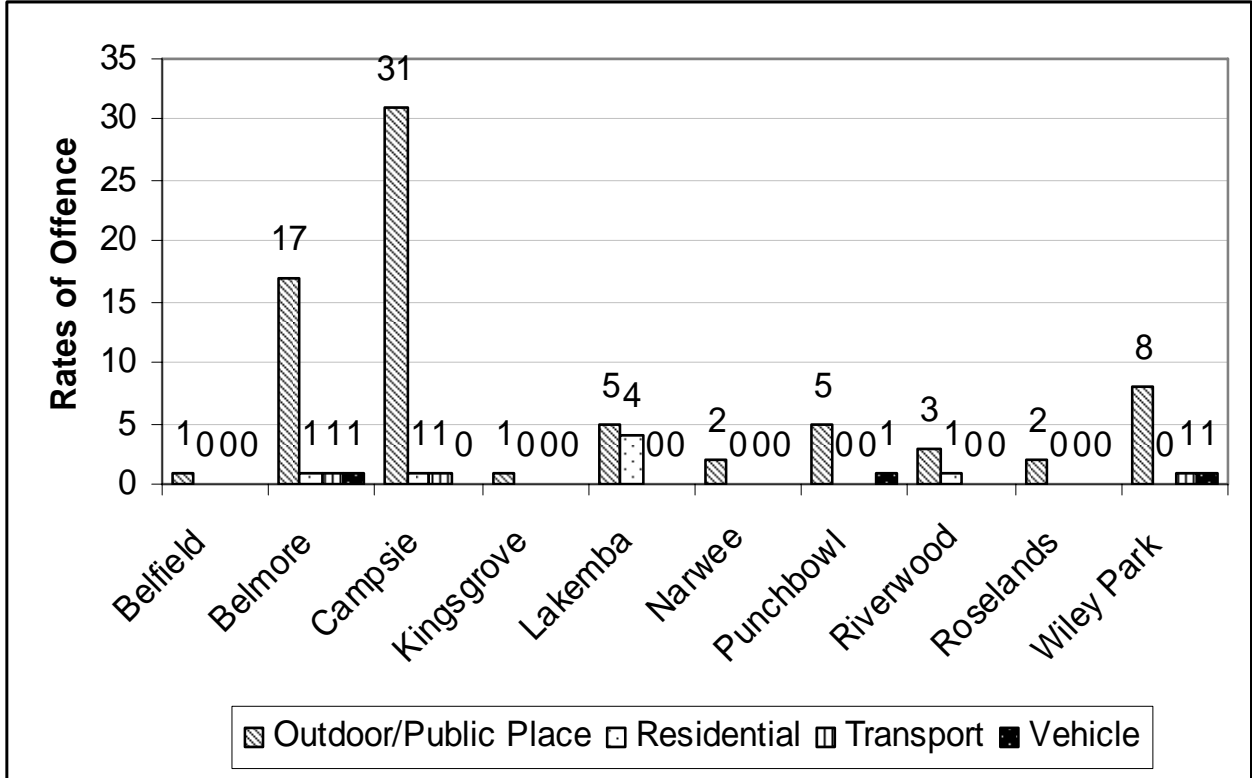
In 2007, 25.7% of robberies were committed on footpaths, followed by the robberies on the road/street (20.1%).

The suburb of Campsie had 20 footpath robberies and 20 street robberies. Lakemba reported having 15 footpath and 13 street robberies, followed by Belmore with 10 footpath robberies and 4 street robberies (Graph 5).

Graph 5 Robbery Place and Premise Type 2007 (Part A)



Graph 5 Robbery Place and Premise Type 2007 (Part B)



NSW Police Campsie Local Area Command

**Age and gender of persons of interest proceeded against by NSW Police:**

	10-17	18-19	20-29	30-39	40+	Unknown	Total%
Male	27	5	32	8	6	0	88%
Female	5	3	1	1	1	0	12%
Unknown	0	0	0	0	0	0	0
<b>Total %</b>	<b>36%</b>	<b>9%</b>	<b>37%</b>	<b>10%</b>	<b>8%</b>	<b>0%</b>	<b>100%</b>

**BOSCAR 2007**

In 2007, males were responsible for over half of robbery offences (88%). In contrast, females were responsible for 12% of robberies.

In 2007, persons aged 20-29 years had the highest rate of robbery offences (37%), followed by persons aged 10-17 years (36%).

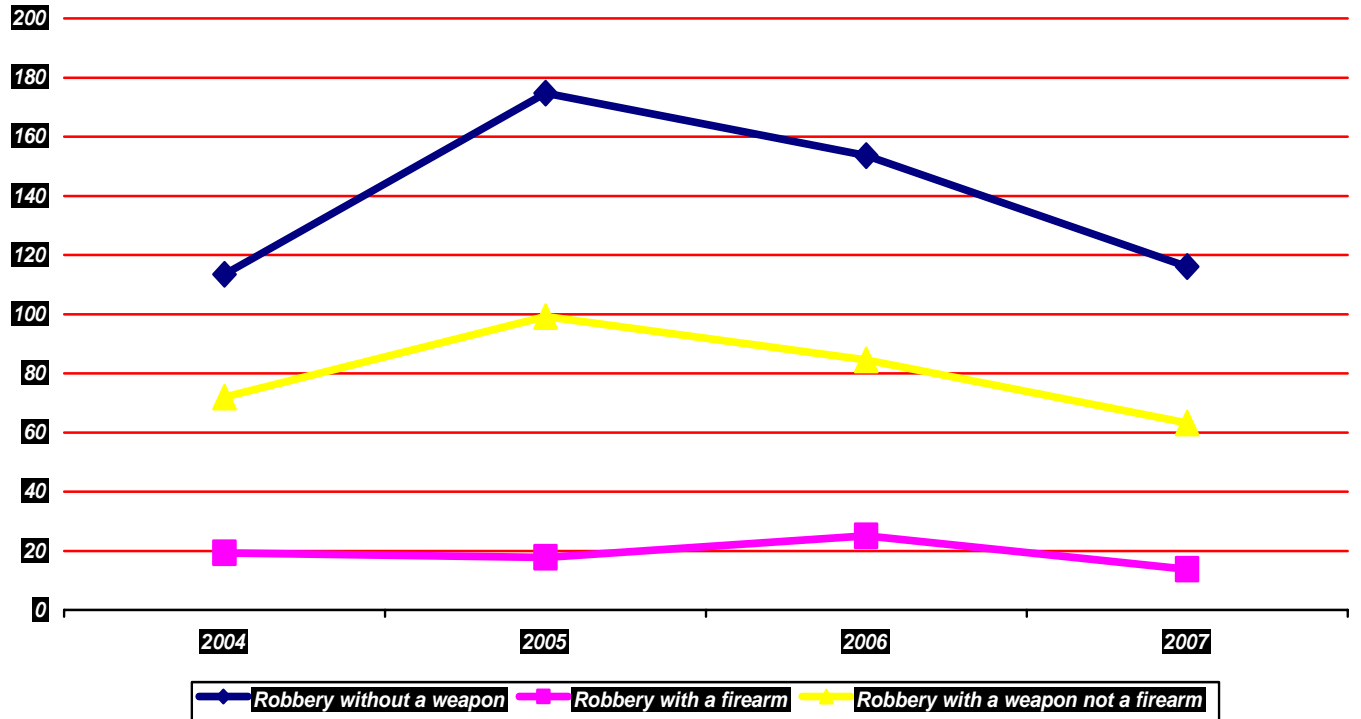
**Age and gender of victims of robbery recorded by NSW Police:**

	<18	18-19	20-29	30-39	40-49	50-59	60+	Unknown	Total%
Male	27	26	107	25	33	22	11	2	66%
Female	6	2	22	10	9	5	16	0	18%
unknown	0	0	0	0	0	0	0	61	16%
<b>Total %</b>	<b>9%</b>	<b>7%</b>	<b>34%</b>	<b>9%</b>	<b>11%</b>	<b>7%</b>	<b>7%</b>	<b>16%</b>	<b>100%</b>

**BOSCAR 2007**

In 2007, more than half of all victims of robbery were male (66%). In contrast, 18% of robbery victims were females, and 16% of robbery victims were unknown.

Recorded Crime trends:



## ***Local Crime Priority 2: Motor Vehicle Theft***

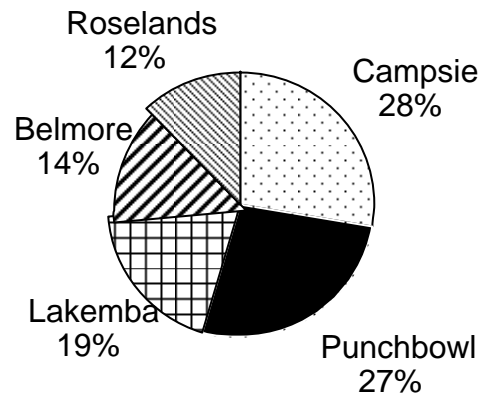
In 2007, Canterbury was placed 16<sup>th</sup> in the state for motor vehicle theft. Overall trends of motor vehicle theft from 2002 – 2007 were down by 7.7%, indicating a gradual decrease of this offence over a five year period.

In 2007, there were 770 reported incidents of motor vehicle theft (559.0 per 100,000) in Canterbury; this is higher than the Sydney SD (427.8 per 100,000) and NSW (390.8 per 100,000).

### **Motor Vehicle Theft by locality:**

The most prevalent areas in Canterbury targeted by motor vehicle theft in 2007 were Punchbowl (16.89%), Lakemba (14.66%), Campsie (14.04%), Belmore (9.44%) and Roselands (8.70%).

Graph 6 Motor Vehicle Theft Locality

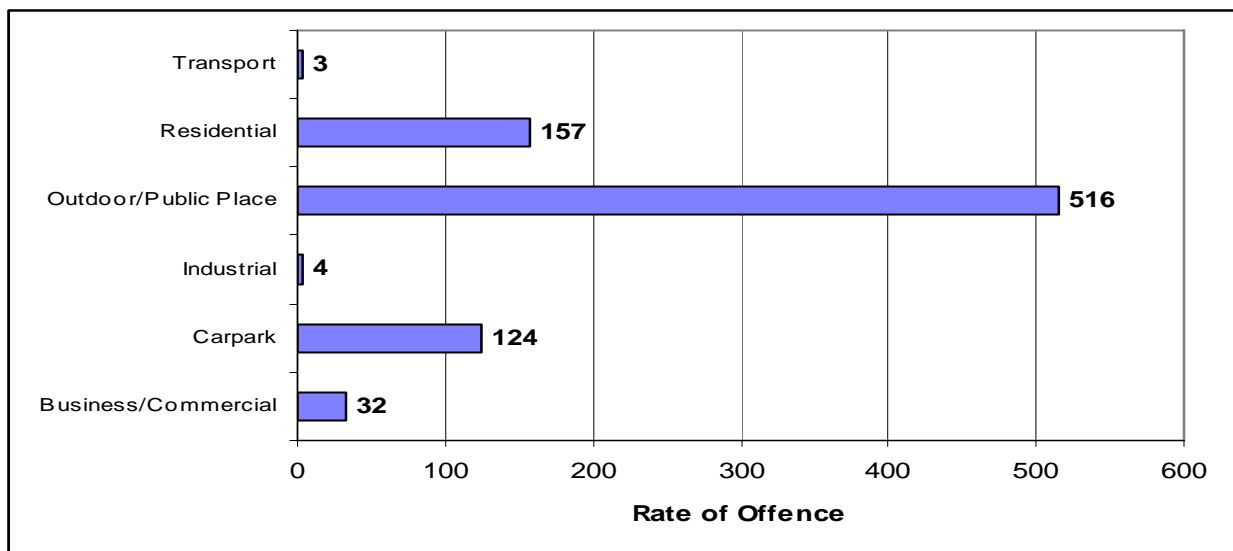


National Motor Vehicle Theft Reduction Council

### Motor Vehicle Theft by place or premise type:

In 2007, the most prevalent offence site for motor vehicle theft was on a road or street (60.9%), followed by a residential drive way (6.6%), a detached residential house (5.0%), residential car park (4.5%), and a business/commercial car park (4.1%) (National Motor Vehicle Theft Reduction Council).

Table 3 Motor Vehicle Theft – place or premise.



National Motor Vehicle Theft Reduction Council

**Age and Gender of Persons of Interest proceeded against by NSW Police:**

	10-17	18-19	20-29	30-39	40+	Unknown	Total %
Male	5	0	7	5	0	0	65%
Female	8	0	1	0	0	0	35%
unknown	0	0	0	0	0	0	0%
<b>Total %</b>	<b>50%</b>	<b>0%</b>	<b>31%</b>	<b>19%</b>	<b>0%</b>	<b>0%</b>	<b>100%</b>

**BOSCAR 2007**

## Summary

The above crime profile has highlighted the current crimes prevalent in Canterbury, that being robbery and motor vehicle theft for 2007. Statistics from the NSW Police Campsie Local Area Command provide further details on the location of offences for both 2006 and 2007.

Canterbury has a higher rate of robbery than the state average, which is likely to take place in our outdoor and public spaces, and on footpaths and streets, particularly in the areas of Campsie, Lakemba, Belmore and Riverwood. According to police statistics, businesses most affected by robbery and fraud include our services stations, news agents and restaurants.

Statistics from the Bureau of Crime Statistics and Research reveal that just under half of offences in Canterbury were committed by those aged 10 -24 years, with three quarters of offences committed by males, particularly relating too liquor, robbery and transport offences. Only a quarter of crimes were committed by females, apprehended for assault, harassment and theft related offences.

This crime profile has highlighted the need to develop programs which address Canterbury's rates of robbery and motor vehicle theft. Bureau of Crime Statistics and Research and the NSW Police Campsie Local Area Command programs identify that programs are needed to address robbery and theft in our outdoor and public spaces and that awareness raising programs are needed for our local businesses and prevention programs for our young people.

## **SECTION 2: Crime Prevention in Canterbury City**

Local Governments have a lead role in the prevention of crime and the nurturing of community safety as they are in a ideal position in the community to work across all sectors, including government, non-government and community organisations. Local Governments have the means to consult directly with the community and the ability to develop programs as a result of consultation (Australian Institute of Criminology 2004).

Crime impacts on our communities both socially and economically, according to Mayhew (2003). The total cost of crime in Australia was estimated to be \$32 million a year (Australian Institute of Criminology 2006). In 2006, the overall cost of graffiti in the City of Canterbury was \$99,537.00, with a total cost of \$524,234.30 over five years (Canterbury City Council 2006).

Recent theoretical developments in crime prevention have moved away from traditional law enforcement models, towards developing policies which engage and consult with the community. Crime prevention literature in Australia recognises and distinguishes between the situational, social and developmental aspects of crime, crime prevention models which are multifaceted in analysis working towards prevention and early intervention (Australian Institute of Criminology 2002).

### **Situational Crime Prevention**

Situational crime prevention assists in addressing place-based crime problems, developing interventions that strengthen guardianship and reduce opportunistic excuses to commit a crime. Situational crime prevention focuses on crime opportunities rather than the offenders themselves enhancing protective factors for the community, and seeks to reduce opportunities, whilst increasing risk for the offender and reducing the rewards of the crime. It aims to reduce crime through the management, design and augmentation of the physical environment' (AIC, Page 2, 2002).

Situational Crime Prevention is based on Rational Choice Theory, whereby offenders make a decision based on the risks and rewards of the actual crime. Through reducing the rewards and beneficial factors of a crime, the offender is less likely to commit the offence (AIC 2002).

### **Social Crime Prevention**

Social Crime Prevention seeks to prevent offending through addressing the social needs of a person and/or community, rather than focusing purely on the physical environment. This approach utilizes a broad range of early intervention programs that work towards changing the social conditions. This involves strengthening community bonds and increasing informal social controls. This model works to integrate potential offenders into the community through the development of youth programs and community schemes. (AIC 2002).

### **Developmental Crime Prevention**

This model differs from Situational and Social Crime Prevention as it focuses on the individual and the attitudinal and behavioural change of potential offenders. Developmental Crime Prevention involves the early identification of potential offenders in order to engage and intervene before offending is likely to occur. Programs associated with this model include educational programs which inform targeted groups of specific crimes, such as educating women on self defense.

This Compact provides a range of programs that address a diverse range of programs and a variety of situations and, social and developmental aspects of crime prevention. This compact is deliberately multifaceted in order to address the prevalent offences in our area.

To ensure a successful community safety compact, partnerships are developed with key players in community crime prevention, such as Government, non-government and community organisations. The Australian Institute of Criminology states that partnerships are an essential and powerful tool in crime prevention as they enable the sharing of information, along with the development of crime prevention strategies (Australian Institute of Criminology 2003).

The City of Canterbury Council's crime prevention partnerships include organisations such as the NSW Police and the Local Area Commands, NSW Fire Service, and the Department of Community Services, Canterbury Community Drug Action Team and the Canterbury Domestic Violence Liaison Committee. Council established the Community Safety Committee (formerly the Community Protection Committee) to monitor and manage the programs developed with our partners.

## **SECTION 3: Stakeholders**

The City of Canterbury Council works alongside the following groups to develop and implement programs throughout Canterbury.

### **Campsie Liquor Accord**

The Campsie Liquor Accord is a partnership between the Department of Liquor, Gaming and Racing, NSW Police Campsie Local Area Command, Canterbury Licensees, Canterbury Community Drug Action Team and City of Canterbury Council. The Accord has been set up to address alcohol related crime, monitor the responsible service of alcohol and to increase safety in and around licensed premises. The Accord will establish a network with authorities and licensees to increase communication regarding alcohol related crime.

### **Crime Prevention through Environmental Design (CPTED)**

#### **Assessments**

Safety Audits are conducted with the City of Canterbury Council and NSW Police. Referrals are received from the community and police regarding public spaces. Inspections assess the urban environment in accordance with the model Crime Prevention through Environmental Design (CPTED), and propose solutions to the environment, either in design, construction or redevelopment, that limit opportunities for, or prevent crime.

### **Canterbury Domestic Violence Liaison Committee**

The City of Canterbury Council is supportive of the work of the Canterbury Domestic Violence Committee. This committee consists of over 20 service providers who meet on a monthly basis to discuss issues relating to Domestic Violence. Council supports this committee through funding from our community grant donations scheme, and providing a venue to meets on a monthly basis.

### **Canterbury Community Drug Action Team**

The Canterbury Community Drug Action Team is a committee with the role of raising awareness of drugs and alcohol in the community. This committee consists of community representatives, NSW Police, City of Canterbury Council, NSW Health and service providers that work within Canterbury. The Community Drug Action Team has conducted research into drug issues in the community, along with providing the community with a constant source of information.

### **Road Safety Advisory Committee**

Improving road safety in Canterbury City is a Council wide responsibility. Each division of Council plays a role in making our roads safer. Council also works together with other stakeholders including the Police, the Roads and Traffic Authority and the Central Sydney Area Health Service to obtain a coordinated approach to implementing road safety.

### **Development Assessment Sub Committee**

The development assessment (DA) sub-committee meets on a regular basis to assess DA plans. The DA subcommittee will assess DAs in accordance with Crime Prevention through Environmental Design, making a series of recommendations which will request changes to be made if safety has not been adequately considered during the development application's design phase.

## **SECTION 4: Responsibility for implementing this Plan**

Council shares the responsibility for the implementation of this plan with the NSW Police and other local stakeholders. Priority areas of this Compact have been identified through community consultation and are supported by our Corporate Services Division.

An Action Plan has been developed to ensure that program areas are implemented and to ensure that the priority areas are addressed.

Our commitment to community safety is evident through the number of programs funded and endorsed by Council. Furthermore, we are committed to a model of capacity building, empowering the community through the provision of resources and information to enable residents to make informed choices regarding their safety, both within the home and on the street.

### **Consultation and Evaluation**

Consultation and evaluation are important aspects of our work at the City of Canterbury Council. The use of consultation and evaluation techniques enables Council to determine whether programs are meeting set goals and outputs.

Council uses a variety of techniques to assess programs and to consult with the local community. These techniques are used to gather information from the community regarding the implementation of programs and gauge the community's perception of crime and the fear of crime the local area.

### **Consultation**

Community consultation is fundamental in the development and monitoring of community safety programs. We conducted two types of consultation processes for this Compact in 2007, including a Community Safety Survey and our Social Plan consultations.

Our consultation process has allowed us to establish priority areas, which need to be acknowledged in the delivery of our programs. The identified priority areas for this Social Plan are the following areas and target groups.

- Public Spaces;
- Youth;
- Children and Families;
- Seniors;
- Drug and Alcohol; and
- CALD communities.

## Evaluation

Evaluation techniques are used to determine whether programs have been successful in meeting set milestones and outputs.

We have developed an evaluation plan as part of assessment and review of programs for this plan. Our evaluation process distinguishes between program outputs and outcomes, looking at key performance indicators and how programs are reaching their project outcomes.

- Output Evaluation – This investigates whether programs have achieved set targets and outputs, and whether the aims and objectives of the program were achieved from the development of the program.
- Outcome Evaluation – This will investigate whether the program has had a direct impact on the community and target groups, such as the dissemination of information and resources to those affected by crime.